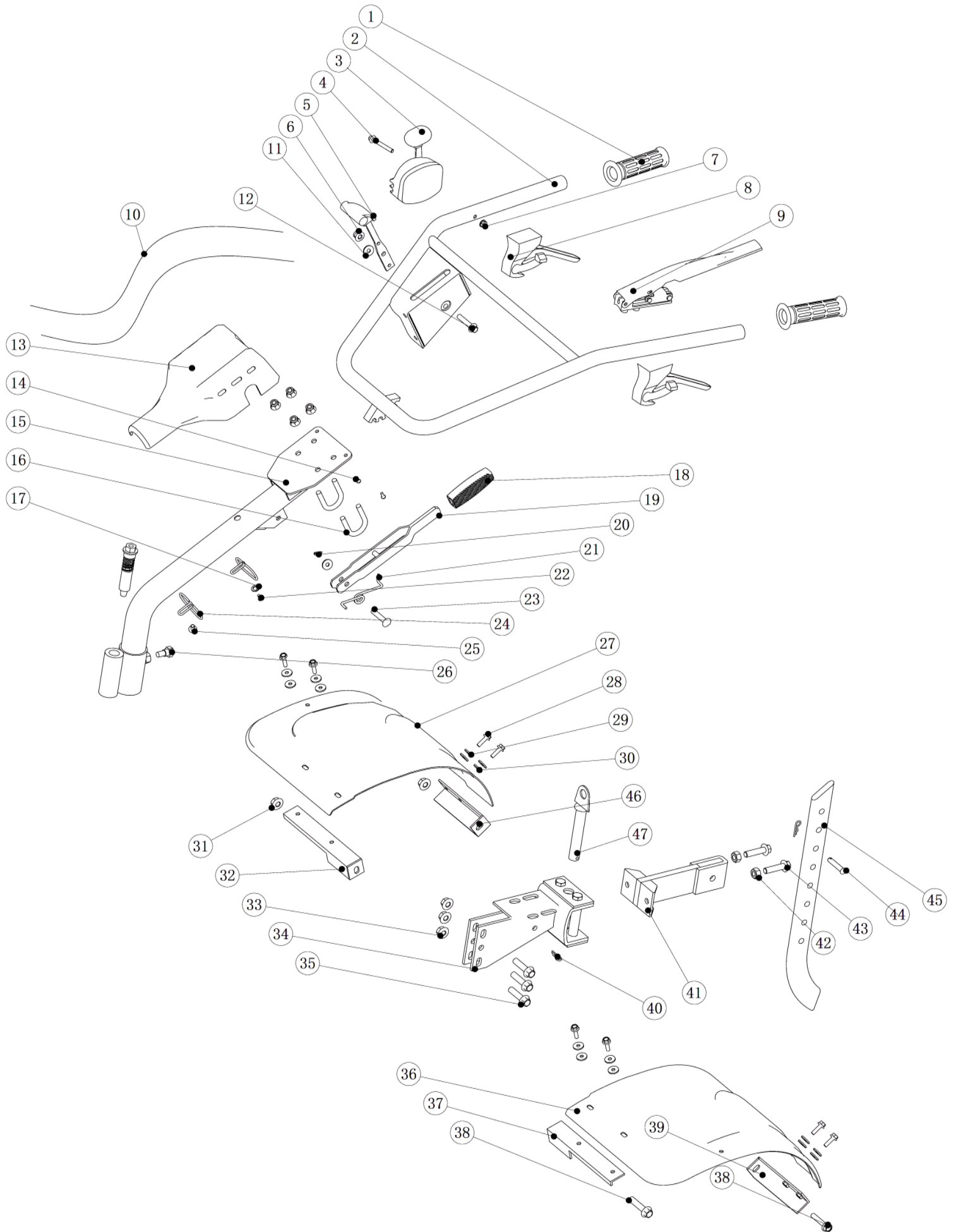
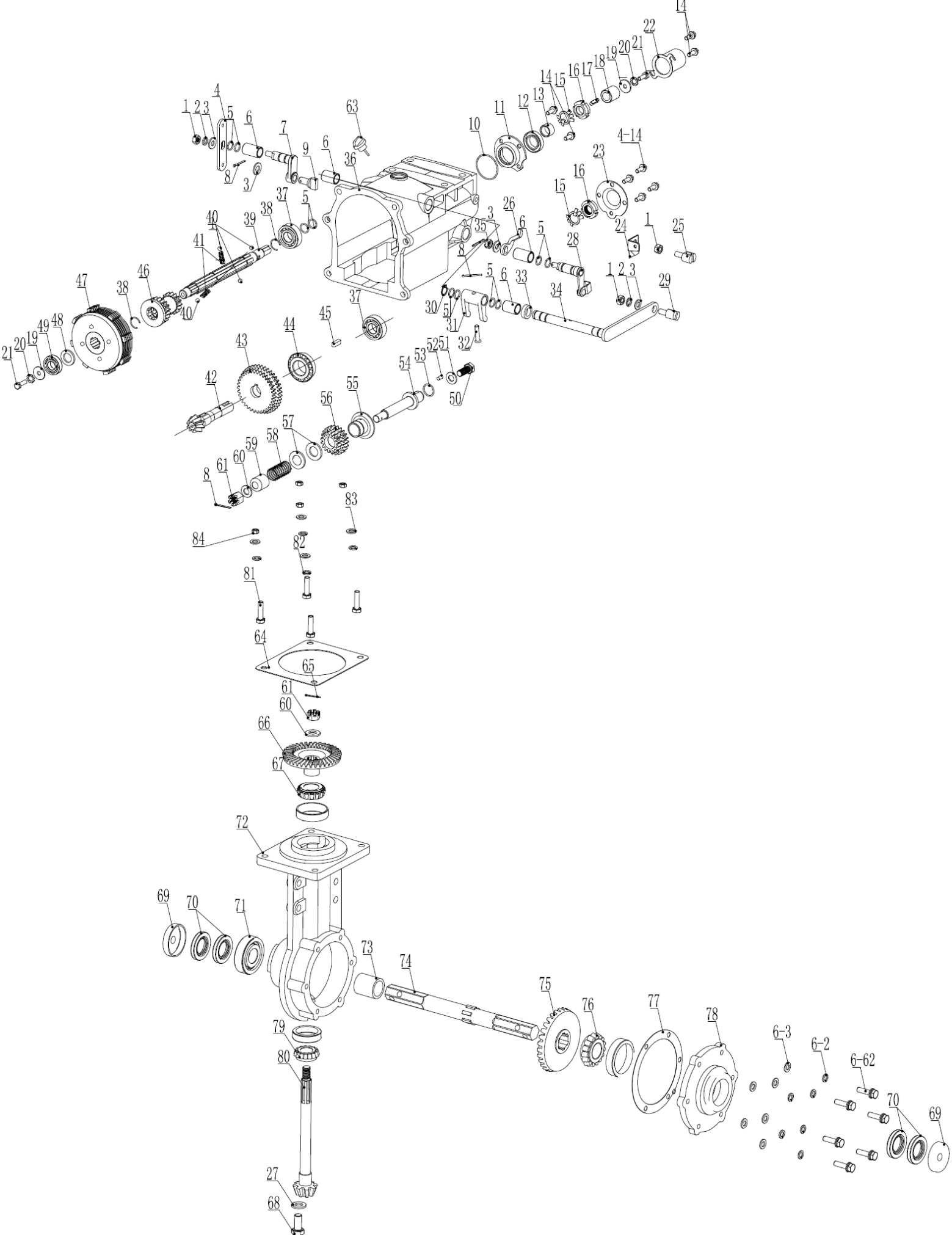


MS 7500 CF - MS 7500 CFL



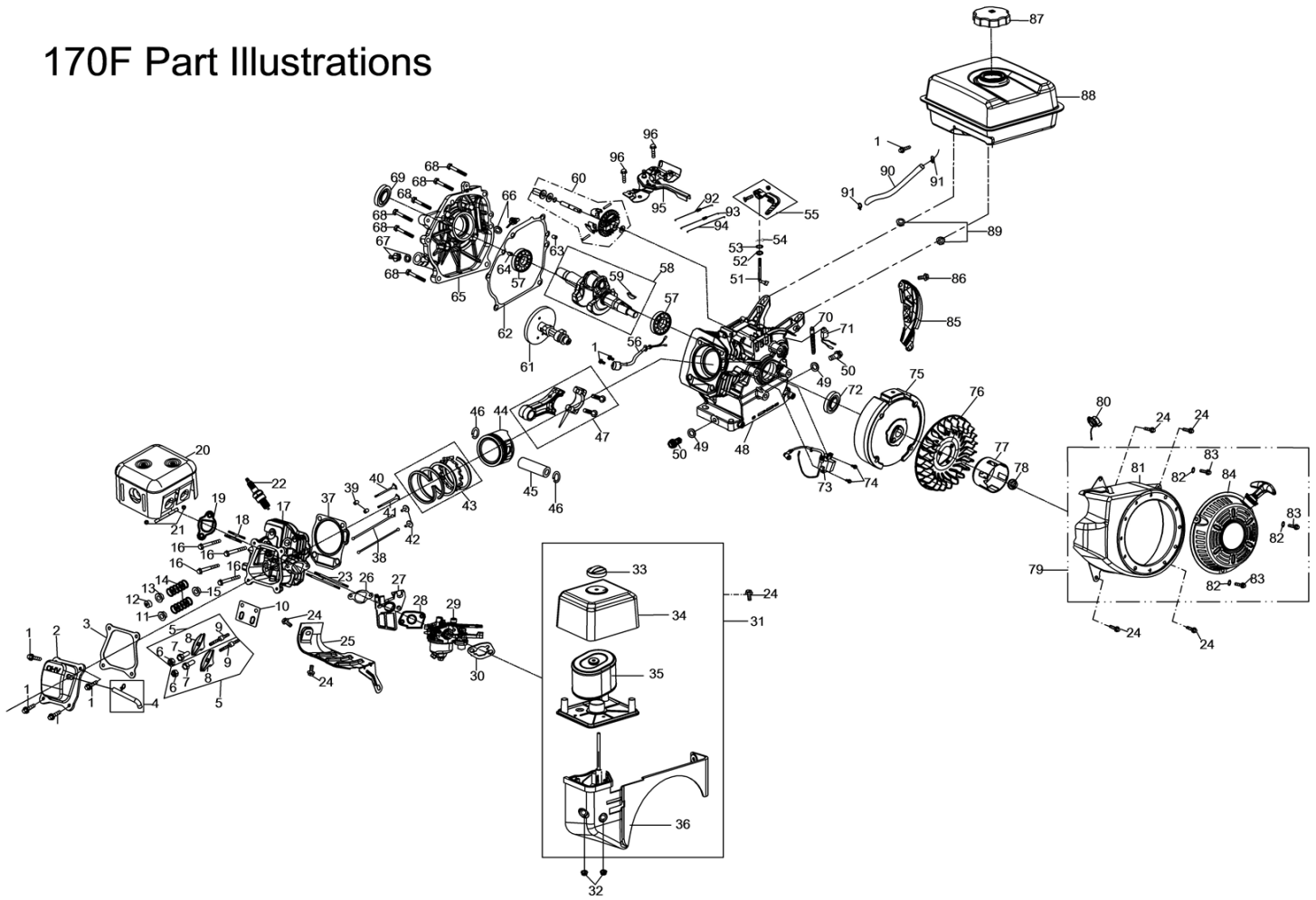
24	502200477501	Clip ring	2
25	GB5789050120670	Bolt M5×12	1
26	502402420001	Locking bolt M12	1
27	505402225422	Fender/left	1
28	GBT16674060160170	Bolt M6×16	8
29	GB96060182070	Washer Φ6×Φ18×2	8
30	505402110003	Rubber washer Φ6×Φ20×2	8
31	GB6177080000270	Nut M8	6
32	505413004106	Front support of fender/left	1
33	GB6177100000370	Nut M10	9
34	505201184105	Hinge box	1
35	GBT16674100400370	Bolt M10×40	3
36	505402225423	Fender/right	1
37	505413004107	Front support of fender/right	1
38	GB5787080500270	Bolt M8×50	2
39	505414004108	Back support of fender/right	1
40	505201437501	B type pin φ3	1
41	505200774101	Connect part	1
42	GB6170100000270	Hexagon head nut M10	2
43	GB5782100500570	Hexagon head bolt M10×50	2
44	501200217503	Pin shaft φ10×40	1
45	505202214101	Resistance blade	1
46	505414004107	Back support of fender/left	1
47	505201177501	Big pin φ35×φ18×110	1
48	GBT16674100500170	Bolt M10×50	2
49	505202594101	Gear shift cable seat	1
50	GBT16674100300375	Bolt M10×30	2
51	505100204110	Bush	2
52	505201161914	Handle seat	1
53	505101140001	Gasket of gearbox	1
54	GBT16674080300270	Bolt M8×30	4
55	GBT16674080400270	Bolt M8×40	2
56	505101100001	Cover of clutch	1
57	505100440001	Deep groove ball bearing 6007	1
58	GBT70080250270	Hexagon socket head cap screw M8×25	4
59	GB93080214270	Spring washer φ8	4
60	505100791909	Flange	1
61	505100990001	Gasket of flange	1
62	GBT16674100350370	Bolt M10×35	2
63	505201154012	Support of engine	1
64	505201624101	Front frame	1
65	FB0001120200270	Pressure relief bolt M12×125×20	1
66	505100180001	Dowel pin	1
67	110200490001	metal cable clip	1
68	GBT16674060100170	Bolt M6×10	1
69	502202580001	Rotary cable	1
70	505200810003	Reverse cable	1



Ref No	Part No	Description	Qty
1	GB6170080000270	Hexagon nuts M8	3
2	GB93080214270	Single coil spring lock washers, Normal type M8	8
3	GB97080152070	Flat pad $\phi 8$	10
4	505100947504	Shift arm	1
5	508100380005	O-Ring	10
6	505100200003	Bush $\phi 14 \times \phi 18 \times 30$	4
7	505100324101	Shift fork shaft	1
8	101100030004	Cotter $\phi 25 \times 25$	4
9	505101054101	Shifting fork	1
10	505100380002	O-Ring $\phi 40 \times \phi 2$	1
11	505100957501	Principal shaft gland	1
12	505100360003	Oil Seal $\phi 20 \times \phi 36 \times 7$	1
13	505101110001	Principal shaft bushing $\phi 16 \times \phi 20 \times 12$	1
14	GB5789060140170	Hexagon flange boils M6 \times 14	8
15	505100764101	Lock washer $\phi 16$	2
16	GBT812160000370	Round nut M16	2
17	505200860002	Flat key C6 \times 20	1
18	505100977501	Principal shaft key bushing	1
19	GB96060221670	Plain washers-large $\phi 6 \times 22 \times 2$	2
20	505102150002	Spline washer $\phi 6$	2
21	GB5782060160570	Hexagon head boils M6 \times 16	2
22	505100987501	Principal shaft guard	1
23	501101064003	Auxiliary shaft end cover	1
24	505100687501	Clutch line pull seat	1
25	505200820001	Reverse line seat	1
26	505100834101	Reverse gear fork	1
27	505102100001	Plastic package cushion	1
28	505100844101	Reverse gear fork shaft	1
29	505100937501	Clutch line seat	1
30	GBT894140001041	Circlip $\phi 14$	1
31	505100344101	lutch fork	1
32	508200217501	Shaft pin $\phi 6 \times 28$	1
33	505100207501	Bush $\phi 14 \times \phi 22 \times 6$	1
34	505100357501	Clutch fork shaft	1
35	GB6178080000270	Hexagon slotted nut M8	1
36	505100015101	Upper gear case	1
37	505100440004	Deep groove ball bearing 6203	2
38	505102140001	Shaft circlip $\phi 17 \times \phi 2$	2
39	505100120001	Principal shaft	1
40	501102120001	Steel ball $\phi 635$	4
41	505102160001	Spring $\phi 6 \times \phi 08 \times 14$	2
42	505100130001	Countershaft	1

43	505100710001	Countershaft dual gear	1
44	505100440012	TRB 30203	1
45	101400867017	Flat key 5×5×23	1
46	505100160001	Principal shaft dual gear	1
47	505100910001	Clutch core	1
48	505100230001	Washer $\phi 155 \times \phi 26 \times 25$	1
49	505100440005	深沟球轴承 6202	1
50	GB5782100200570	Hexagon head bolts M10×20	1
51	GB97220104070	Washer $\phi 10 \times \phi 22 \times 4$	1
52	GB119060100070	Round pin $\phi 6 \times 10$	1
53	505100380001	O-Ring $\phi 18 \times \phi 18$	1
54	505100890002	Reverse gear shaft	1
55	505100880001	Reverse gear push plate	1
56	505100730001	Reverse dual gear	1
57	GB97160263075	Washer $\phi 16 \times \phi 26 \times 3$	2
58	505102160003	Spring $\phi 16 \times \phi 20 \times 85$ (n)×55(L)	1
59	505100857501	Reverse gear spring lock bushing	1
60	GB97120243070	Washer $\phi 12$	2
61	GB6178120000470	Hexagon slotted nut M12	2
62	GB5782080300570	Hexagon head bolts M8×30	6
63	505100418501	Dipstick	1
64	505102170001	Gear case gasket	1
65	106100037501	Cotter $\phi 3 \times 30$	1
66	505101010001	Driven bevel gear	1
67	505100440009	TRB 30205	1
68	FB0001120120270	Oil drain bolt M12×125×12	1
69	505100677501	Dust cover	2
70	505100360001	Oil seal $\phi 25 \times \phi 47 \times 7$	7
71	505100440007	Deep groove ball bearing 6305	1
72	505100015103	Lower gear case	1
73	505100204101	Bush $\phi 253 \times \phi 36 \times 37$	1
74	505100110001	Hexagon output shaft	1
75	505101040001	Travlling bevel gear	1
76	505100440010	TRB 30305	1
77	505102180001	Travlling gear case gasket	1
78	505100565101	Lower gear case end cap	1
79	505100440008	TRB 30204	1
80	505100900001	Travelling bevel gear shaft	1
81	GBT16674100400370	Bolt	4
82	GB97100202570	Washer	4
83	GB93100265270	Washer	4
84	GB6170100000370	Nut	4

170F Part Illustrations



POS.	PART NUMBER	DESCRIPTION	QTY
1	B057890006001670B	BOLT M6×16	7
2	11221-LC90-0100	CYLINDER HEAD COVER	1
3	90229-KB01-0400	GASKET, VALVE COVER	1
4	12104-IC77-0200	VENTING HOUSE	1
5	15400-LC90-0001	ROCKER ARM ASSEMBLY	2
6	15414-KB01-0000	LOCK NUT	2
7	15403-KB01-0000	ADJUST NUT	2
8	15401-LC90-0001	ROCKER ARM	2
9	15415-KB01-0000	ROCKER ARM STUD	2
10	15406-KB01-0000	ROCKER ARM BASE	1
11	15711-KB01-0000	VALVE SPRING SEAT	1
12	15713-KB01-0000	ADJUST CAP, EXHAUST	1
13	15712-KB01-0000	VALVE SPRING SEAT	1
14	15703-KB01-0000	VALVE SPRING	2
15	1572B-KB03-0000	INTAKE VALVE SEAL	1
16	1122R-LC90-0000	BOLT M8×60	4
17	1122B-LC90-0000	CYLINDER HEAD	1
18	91138-KB03-0000	STUD M8×34	2
19	18066-LC90-0000	GASKET, EXHAUST PIPE	1
20	18000-LC90-0100	MUFFLER	1
21	B061700008000000B	NUT M8	2
22	81300-KB01-0000	SPARK PLUG	1
23	91127-LC90-0300	STUD M6×110	2
24	B057890006001270B	BOLT M6×12	7

25	19113-LC90-0000	SHROUD	1
26	17107-LC90-0000	GASKET, CARBURETOR INSULATOR	1
27	17112-KB01-0000	CARBURETOR INSULATOR	1
28	17182-KB01-0100	CARBURETOR GASKET	1
29	17100-LC90-0200	CARBURETOR	1
30	17113-KB01-0000	GASKET	1
31	16100-LC90-0100	AIR FILTER	1
32	24682-LC90-0000	BOLT	2
33	16124-LC90-0000	AIR FILTER COVER	1
34	16105-LC90-0100	AIR FILTER COVER	1
35	16101-KB01-0000	AIR FILTER ELEMENT	1
36	16127-LC90-0100	AIR FILTER BASE	1
37	9022B-LC90-0000	GASKET,CYLINDER HEAD	1
38	15321-LC90-0000	PUSH ROD	2
39	91521-10001600000	DOWEL PIN $\Phi 10 \times 16$	2
40	15701-KC67-0000	INTAKE VAVLE	1
41	15702-LC90-0000	EXHAUST VAVLE	1
42	15002-LC90-0000	TAPPET	2
43	1310A-KC67-0100	PISTON RING SET	1
44	13101-LC90-0000	PISTON	1
45	13102-LC90-0000	PISTON PIN	1
46	13105-KB01-0000	CIRCLIP, PISTON PIN	2
47	13220-LC90-0000	CONNECTING ROD	1
48	12007-LD29-0000	CRANKCASE	1
49	91302-91001516000	WASHER $\Phi 10 \times 1.5 \times \Phi 16$	2
50	91103-KB01-0000	DRAIN BOLT M10 \times 1.25 \times 15	2
51	24605-LC90-0000	GOVERNOR GEAR SHAFT	1
52	T1105006001100400	OIL SEAL $\Phi 6 \times \Phi 11 \times 4$	1
53	90101-10052000190	O-RING $\Phi 5.2 \times 1.9$	1
54	24606-KB01-0000	COTTER PIN	1
55	24640-LC90-0000	GOVERNOR LEVER	1
56	87400-KB01-0100	OIL SENSOR	1
57	92102-00000006205	BEARING 6205	2
58	13230-LC90-1400	CRANKSHAFT	1
59	91601-IB84-0000	WOODRUFF KEY	1
60	24620-LC90-0100	GOVERNOR GEAR	1
61	15100-LC90-0000	CAMSHAFT	1
62	90208-LC90-0400	GASKET, CRANKCASE COVER	1
63	91521-07001400000	DOWEL PIN $\Phi 7 \times 14$	1
64	91521-09001400000	DOWEL PIN $\Phi 9 \times 14$	1
65	12301-LD29-0000	CRANKCASE COVER, LEFT	1
66	14301-IC91-0000	DIPSTICK	1
67	14311-LC90-0000	OIL PLUG	1
68	B057890008003270B	BOLT M8 \times 32	6
69	T1107025004125600	OIL SEAL $\Phi 25 \times \Phi 41.25 \times 6$	1
70	10008-9999-0100	CLAMP	1
71	87420-KB01-0000	OIL SENSOR	1

72	T1105025004125600	OIL SEAL $\Phi 25 \times \Phi 41.25 \times 6$	1
73	81200-LC90-0300	IGNITION MODULE	1
74	B057890006002570B	BOLT M6 \times 25	2
75	82150-LC90-0000	FLYWHEEL	1
76	19102-KB01-0000	COOLING FAN	1
77	21520-KB01-0700	STARTER CUP	1
78	B061770F14000070B	NUT M14 \times 1.5	1
79	21500-LC90-04006Y	RECOIL STARTER	1
80	72380-KB01-1800	ENGINE SWITCH	1
81	21530-LC90-0600	BLOWER HOUSING	1
82	B000950006000000B	WASHER $\Phi 6$	3
83	B166740006001070B	BOLT M6 \times 10	3
84	21510-LC90-05006Y	RECOIL STARTER	1
85	19112-LC90-0100	LOWER SHIELD	1
86	B057890006001670B	BOLT M6 \times 16	1
87	61120-LC90-1100	FUEL CAP	1
88	61100-LC90-15006Y	FUEL TANK	1
89	B061770106000060B	NUT M6	2
90	T2999904000800205	FUEL HOSE $\Phi 4 \times \Phi 8 \times 205$	1
91	17020-KB01-0000	CLAMP, FUEL HOSE	2
92	24602-LB16-0100	GOVERNOR SPRING	1
93	24603-KB01-0000	IDLE SPRING	1
94	24604-KB01-0000	THROTTLE LINKAGE	1
95	24610-KB01-0000	GOVERNOR GEAR BRACKET ASSY	1
96	B057870006001270B	BOLT M6 \times 12	2